

Connection in bottom

[42,09]  
~ 1069

[40,31]  
~ 1024

[39,37]  
1000

[14,5]  
350 - 368

[3,65]  
93

[9,06]  
230

[13,78]  
350

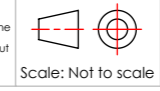
[3,39]  
86

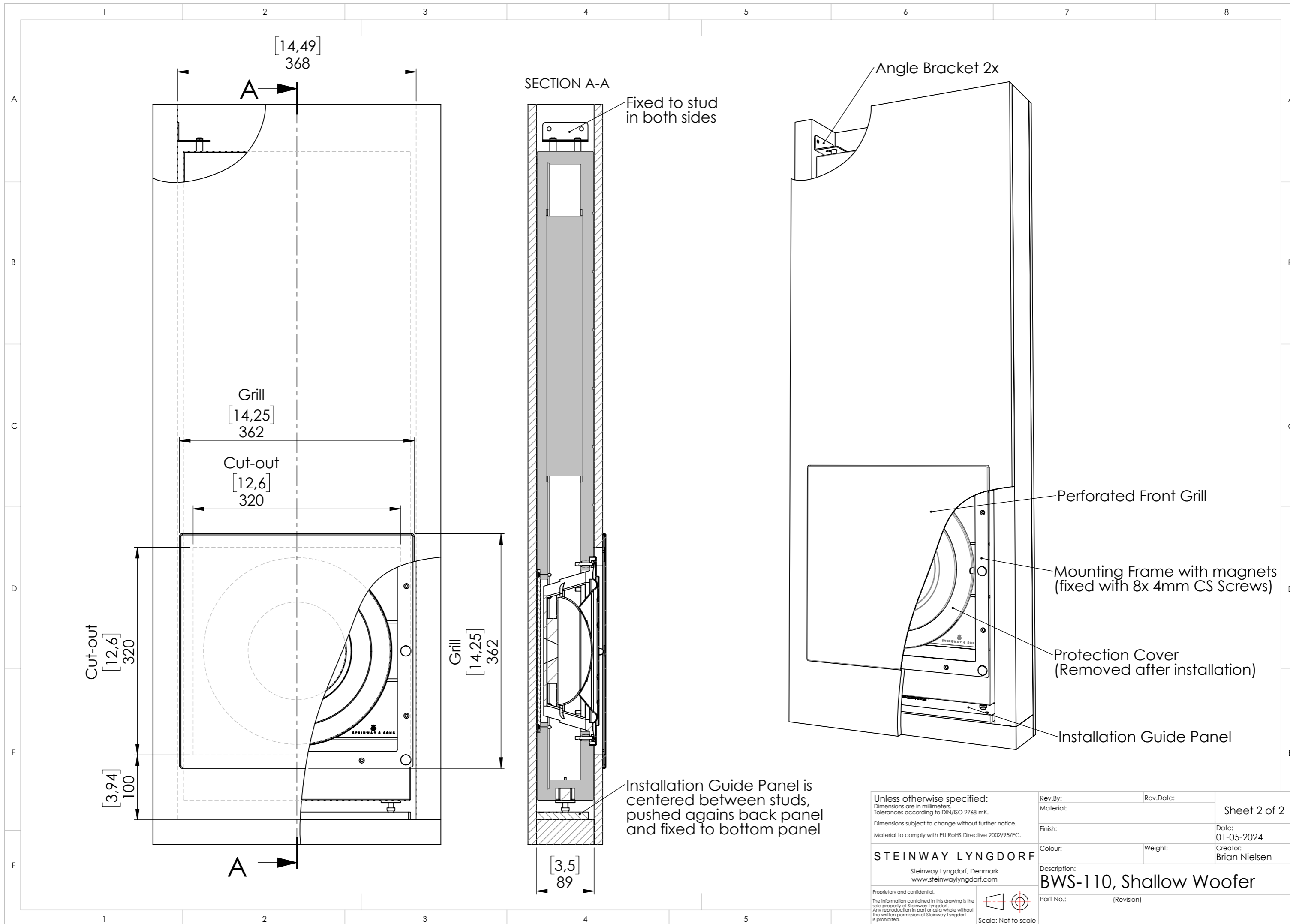
Unless otherwise specified:  
Dimensions are in millimeters.  
Tolerances according to DIN/ISO 2768-mK.  
Dimensions subject to change without further notice.  
Material to comply with EU RoHS Directive 2002/95/EC.

**STEINWAY LYGNDORF**  
Steinway Lyngdorf, Denmark  
www.steinwaylyngdorf.com

Proprietary and confidential.  
The information contained in this drawing is the sole property of Steinway Lyngdorf.  
Any reproduction in part or as a whole without the written permission of Steinway Lyngdorf is prohibited.

Rev.By:	Rev.Date:	Sheet 1 of 2
Material:		
Finish:		Date: 01-05-2024
Colour:	Weight:	Creator: Brian Nielsen
Description: <b>BWS-110, Shallow Woofer</b>		
Part No.:	(Revision)	





[14,49]  
368

A

Grill  
[14,25]  
362

Cut-out  
[12,6]  
320

Cut-out  
[12,6]  
320

Grill  
[14,25]  
362

[3,94]  
100

A

SECTION A-A

Fixed to stud in both sides

Installation Guide Panel is centered between studs, pushed against back panel and fixed to bottom panel

[3,5]  
89

Angle Bracket 2x

Perforated Front Grill

Mounting Frame with magnets (fixed with 8x 4mm CS Screws)

Protection Cover (Removed after installation)

Installation Guide Panel

Unless otherwise specified: Dimensions are in millimeters. Tolerances according to DIN/ISO 2768-mK. Dimensions subject to change without further notice. Material to comply with EU RoHS Directive 2002/95/EC.		Rev.By:	Rev.Date:	Sheet 2 of 2
STEINWAY LYNGDORF Steinway Lyngdorf, Denmark www.steinwaylyngdorf.com		Material:	Finish:	
Proprietary and confidential. The information contained in this drawing is the sole property of Steinway Lyngdorf. Any reproduction in part or as a whole without the written permission of Steinway Lyngdorf is prohibited.		Colour:	Weight:	Creator: Brian Nielsen
Scale: Not to scale		Description: <b>BWS-110, Shallow Woofer</b>		Part No.: (Revision)