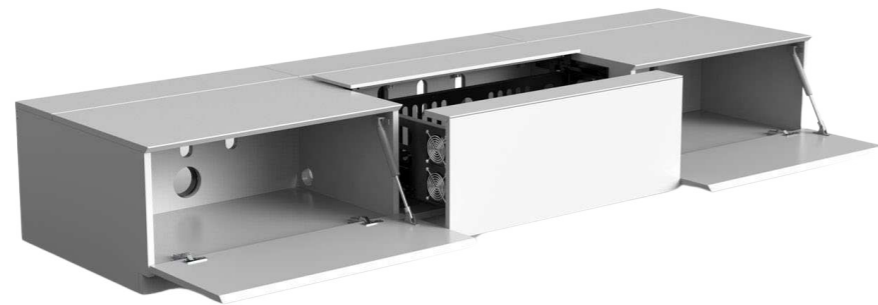


Laser TV *Cabinet*



Product Features

- Seamless, fully concealed design.
- Super silent motor to minimise the operating noise.
- Fully synchronised. The draw, screen flip, screen and projector turn on/off automatically with one-key control.
- Reliable Hard-wired Screen Connection
- Broad compatibility, suitable for most of the UST projectors
- Various colour options to fit your style
- Made from formaldehyde-free MDF board to avoid distortion in the long term



- Bluetooth enabled for convenient and precise control with iOS/Android smartphone/tablet
- Aluminium draw compartment, durable and reliable



Good to know

The cabinet is compatible with all UST projectors with a throw ratio between 0.20 and 0.25. (120" cabinet is compatible with projectors with the throw ratio between 0.17-0.25:1)

The motorised projector screen is NOT supplied as part of the cabinet's standard package.

The cabinet is available in Three colour options: white, black, walnut and two screen sizes: 100"/120".

The 100" cabinet is also suitable for 92" floor-rising screens.



Product Basics

Cabinet: Formaldehyde-Free MDF board

Number of built-in cooling fan: 4 pairs

Drawer frame: Aluminium

Control: One-key control with projector's remote

Cable Management

Pinch-out panels are located at the rear of the side cabinet units and on the side of the central cabinet unit. The pinch-out holes make easy and tidy cable management possible.

Also, stick-on cable clips are supplied to help organise the cables at the rear of the cabinets.



Adjustable Motorised Projector Platform



The travel distance of the central motorised UST projector draw can be set precisely between 95mm and 230mm.

Once the travel distance is set initially with the cabinet's remote or smartphone, it will be stored and applied automatically every time until it's adjusted again.

AV device friendly

The cabinet is designed to work with other AV devices. The side cabinet units provide ample storage spaces. Two pairs of cooling fans are located at the rear of the side cabinet units to improve ventilation.

Two shelf boards are supplied with the cabinet. When installed, they can help to maximise the space inside the side cabinets.

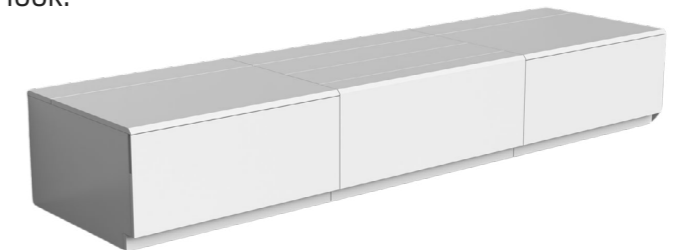
The cabinet also includes an IR signal repeater. If any AV devices stored in the cabinet require IR communication, the repeater can help transmit the signal while the cabinet unit's door is closed.



Concealed Design

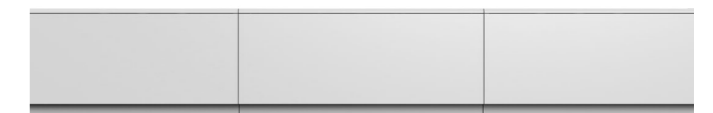
Everything is hidden inside the cabinet when your projection system is not used.

The fully concealed design helps to protect the screen and projector from accidental damage and dust. It also gives your room a tidy, minimalist look.



Plinth Skirting

The plinth skirting prevents dust from accumulating underneath the cabinet, so there is no longer a hard-to-reach space during housekeeping.



Hard-wired | A Reliable System

Unlike other UST cabinets on the market, which use a wireless USB trigger to sync the operation between the screen and cabinet, the communications between key components in the SpaceMaster cabinet's system (the screen, motorised draw, the flip cover, and cooling fans) are all hard-wired to ensure reliable communication.

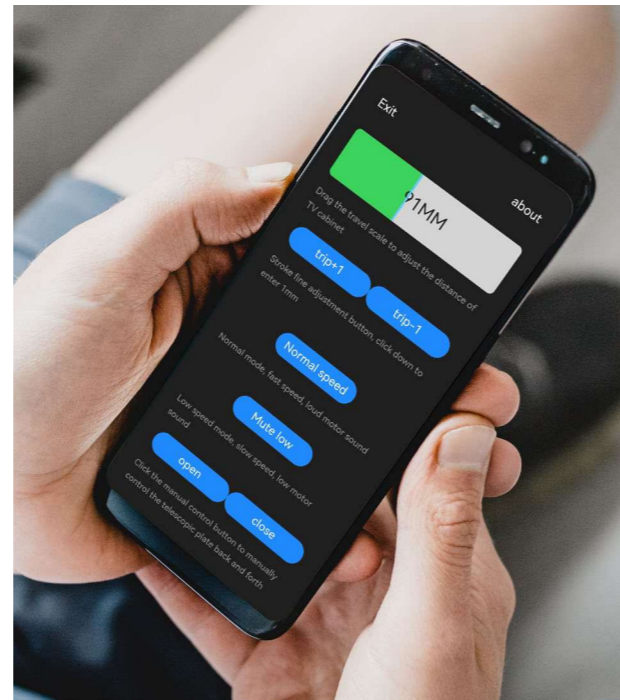
More importantly, because the system is hard-wired, the other components will stop working for product safety when any of the cabinet mechanical parts are down.



Control with smart phone

The cabinet's control unit is Bluetooth-enabled.

With the dedicated mobile app (available for iOS and Android), you can set the drawer's precise travel distance and update its firmware with a few clicks on your smartphone.



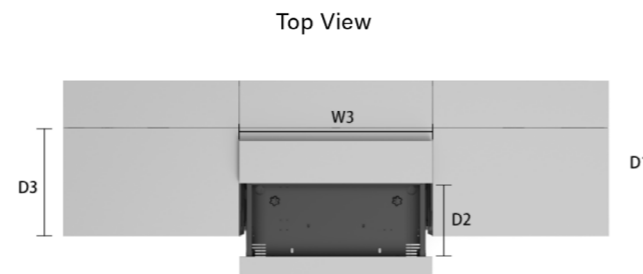
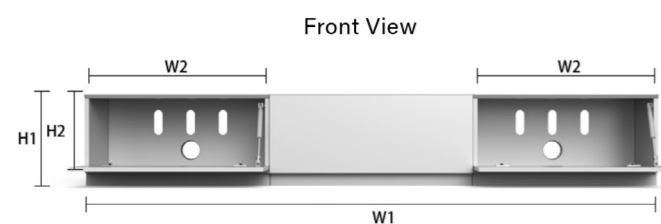
Broad Compatibility

Thanks to the motorised drawer and the ample space in the central cabinet, the cabinet can accommodate most of the UST projectors with a max size of 70*38*20cm and a throw ratio between 0.17-0.25:1 (120" cabinet)/0.20-0.25:1 (100" cabinet)

Measurements

Cabinet Size	H1	H2	W1	W2	W3	D1	D2	D3
100"	410	300	2476	780	916	660	380	410
120"	410	300	2956	1020	916	660	380	410

All measurements in mm



Specifications

SKU	MPC02	MPC14	MPC10	MPC08	MPC15	MPC11
Size	100"	100"	100"	120"	120"	120"
MPN	UV100-IW	UV100-NO	UV100-BK	UV120-IW	UV120-NO	UV120-BK
Compatibility*	UST	UST	UST	UST	UST	UST
Colour	White	Walnut	Black	White	Walnut	Black
Cabinet Overall Dimension (W*D*H)	248*66*41cm			296*66*41cm		
Compatible Projector Size (W*D*H) *Max	70*38*20cm					
Compatible Projector Throw Ratio	0.20-0.25			0.17-0.25		
Compatible Projector Weight	30KG					
Compatible Screen	90"/100"			110"/120"		
Packaging Size (W*D*H) – 100"	125*115*120cm, 190kg					
Packaging Size (W*D*H) – 120"	125*115*120cm, 200kg					

* Only projectors with keystone adjustment function are compatible