



# WA Series Multi-Access Point Deployment Guide

## Deployments with multiple WA Series APs

Multi-AP deployments are now easier than ever with BakPak. With BakPak Lite built into the WA Series APs, BakPak now supports the configuration of most wireless settings—SSIDs, passwords, channel selection, Tx power levels, and more—enabling complete cloud configuration of the wireless network, remotely or onsite, from the web interface and mobile app. Complete BakPak cloud configuration also enables controller-less multi-AP deployments, eliminating additional hardware costs and reducing deployment time.

**Tip:** Example screens in this guide use the WA-2200 only as an example. The deployment process is the same with WA-4200 Series APs.

The goal of this deployment guide is to provide step-by-step instructions on setting up your WA Series wireless network with BakPak. For information about designing the wireless network, see the *Wireless Design Guide* at [pkdge.co/wirelessdesign](http://pkdge.co/wirelessdesign).

## Setting up your first WA Series AP

You need to log in to the first AP and configure it before enrolling it with BakPak.

**Tip:** You can also learn this process from the Smart Skill *WA-2200 Initial Configuration* ([pkdge.co/wa2200-config](http://pkdge.co/wa2200-config)).

### To set up your first WA Series AP:

- 1 Connect the access point to your PoE switch with an Ethernet cable.
- 2 Log in to your router to find the IP address assigned to the access point under the DHCP Client Table, then enter into a web browser (or click) that IP address to open the access point interface. The Log In page opens.

**Tip:** If you do not have a router in your network that distributes IP addresses, you can try to access the access point through its default IP address of **192.168.1.21**.

- 3 In the *Username* box, type **admin**. In the *Password* box, type **password**, then click **Sign in**. The first time you sign in, the *Configure* page opens.

Overview   Connections   **Configure**   Backup/Restore   Logs   Advanced

**This product is not managed by BakPak** [Click here to enroll](#)

**Edit Login Credentials**

**Username**  **Current Password**  **New Password**

**General Device Information**

**Friendly Device Name**  **Device Location**

- 4 Enter and verify a new password (required) before continuing.
- 5 On the *Configure* page, configure these basic settings:
  - Time Zone
  - SSID
  - Guest SSID
- 6 Click **Apply** to complete the setup.

## Getting started with BakPak

Next, the AP needs to be registered to BakPak.

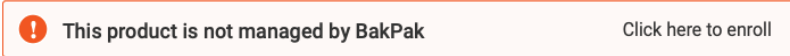
To start managing your multi-AP wireless network with BakPak, you need to register your APs directly to BakPak. When you register the AP directly to BakPak with BakPak Lite Management Agent, you can configure most wireless settings directly through BakPak.

Get started by first enrolling your access point to your existing BakPak account. If this is your first time creating a BakPak account, refer to the *BakPak User Guide* for instructions on getting started with BakPak.

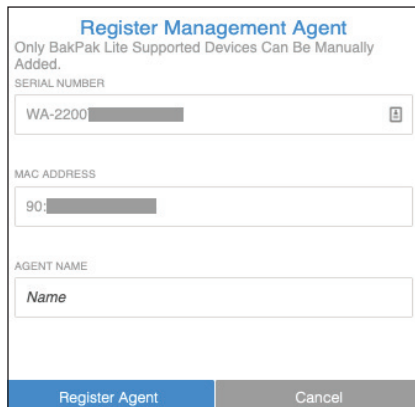
**Tip:** You can also learn this process from the Smart Skill *Registering a WA-2200 to BakPak* ([pkdge.co/wa2200-register](http://pkdge.co/wa2200-register)).

### To enroll the first AP to BakPak:

After signing in to the AP, the following message appears at the top of the page:

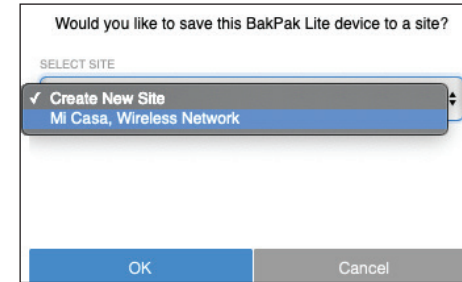


- 1 Click **Click here to enroll**. The *BakPak Registration* page opens. Make sure your web browser allows pop-up notifications from **mybakpak.com**.
- 2 Follow the on-screen instructions to complete your device registration. Make sure to assign the AP a unique Agent name that can be easily identified (for example, "[site name] - [AP location]").

A form titled "Register Management Agent" with the subtitle "Only BakPak Lite Supported Devices Can Be Manually Added." It contains fields for SERIAL NUMBER (with "WA-2200" entered), MAC ADDRESS (with "90:" entered), and AGENT NAME (with "Name" entered). There are "Register Agent" and "Cancel" buttons at the bottom.

- 3 When registration is done, click **Register Agent**.

- 4 Assign the AP to a site. You can either create a new site or add to an existing site.

A dialog box titled "Would you like to save this BakPak Lite device to a site?". It has a "SELECT SITE" dropdown menu with "Create New Site" selected and "Mi Casa, Wireless Network" listed below it. There are "OK" and "Cancel" buttons at the bottom.

**Important:** To gain access to all WA Series wireless configuration settings, you *must* assign the AP to either:

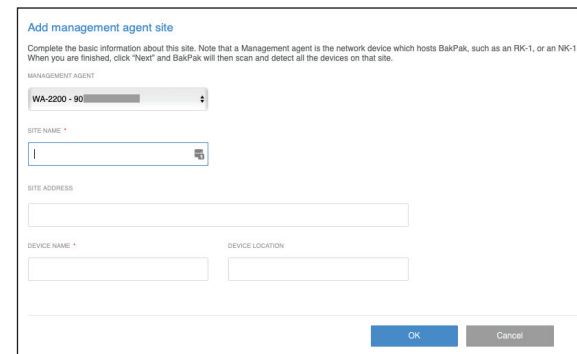
- a new, dedicated WA-2200-only (or WA-4200-only) site, which will automatically register the site as a BakPak Lite site, or
- an existing BakPak Lite site for the same location, if they already have a PE-09N, WR-1, or other APs registered.


**Note:** If the home already has an RK-1 Gigabit Router registered with BakPak, a separate site for the wireless network is still required for access to most configuration settings.



| Site Name   | Online | Unmonitored | Total |
|---|--------|-------------|-------|
| Summer House, Wireless Network : 68.xxx.xxx.xxx                                       | 3      |             | 3     |
| Summer House : 68.xxx.xxx.xxx<br>1234 Main St., Anytown, 12345<br>Acme Communications | 5      | 1           | 6     |

- 5 Add the AP to the site.

A form titled "Add management agent site" with the subtitle "Complete the basic information about this site. Note that a Management agent is the network device which hosts BakPak, such as an RK-1, or an NK-1. When you are finished, click 'Next' and BakPak will then scan and detect all the devices on that site." It contains fields for MANAGEMENT AGENT (with "WA-2200 - 90" selected), SITE NAME, SITE ADDRESS, DEVICE NAME, and DEVICE LOCATION. There are "OK" and "Cancel" buttons at the bottom.

- a Create a device name.
  - b Select the Management Agent (name assigned in Step 4).
  - c Describe the location where the AP is located in the home.
  - d Enter the address of the home. The AP is now assigned to the site.
- 6 To edit the name, location, or address of the AP later, click the  (more) icon.

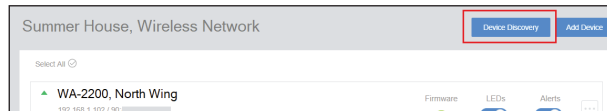
## Discover additional WA Series APs for automatic BakPak enrollment

Instead of individually enrolling each WA Series AP, you can discover all additional WA Series APs directly through BakPak, saving you significant deployment time—especially for your larger installs.

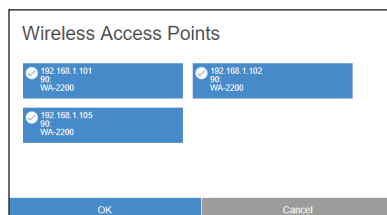
**Tip:** You can also learn this process from the Smart Skill *Applying WA-2200 Configuration Settings to Multiple Access Points Simultaneously* ([pkdge.co/wa2200-multi-ss](http://pkdge.co/wa2200-multi-ss)).

### To discover additional WA Series APs:

- 1 Ensure all additional APs are powered on and connected to the network.
- 2 In BakPak, select the WA Series AP site that you created, then click **Device Discovery**.



Any additional WA Series APs are discovered and appear as tiles that can be selected (already selected by default).



- 3 Click **OK**. The APs are added to the site.

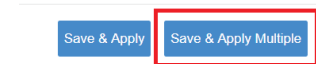
## Copying settings to multiple APs through BakPak

In addition to the AP's built-in interface, most AP configuration settings are also available through BakPak—SSIDs, transmit power levels, channel selection, and roaming features, and more. Using BakPak, all of those settings can be copied from one WA Series AP to all others on the same BakPak Lite site.

- The *SSID Configuration* tab provides SSID and guest SSID settings (enable/disable, delete, and add SSID) and password settings. These settings were already completed during the first AP's initial setup.
- The *Advanced Settings* tab includes time zone, band-steering, channel selection and width, wireless mode, transmit power, and roaming.

### To copy an AP's settings to multiple APs through BakPak:

- 1 Click the site for the WA Series APs, then click the access point to modify or copy.
- 2 Modify the desired settings, if any, in the *SSID Configuration* and *Advanced Settings* tabs, then click **Save & Apply Multiple** in each tab.



**Important:** After making changes in either tab, make sure you click **Save & Apply Multiple** in both tabs for all changes to take effect.

- 3 Click to select each AP to copy the settings to (selected APs are in blue), then click **OK**. The settings are applied to the selected APs.

### Default settings for WA Series APs:

- Band-steering: **Off**
- Channel selection: **Auto**
- Channel width: **80 MHz** for 5 GHz band; **20 MHz** for 2.4 GHz band
- Wireless Mode: **A/N/AC Mixed**
- Transmit Power Level: **18 dBm** for 2.4 GHz band; **13 dBm** for 5 GHz band
- Fast Bss Transition and Client Reject RSSI: **Off**

For more information on wireless network design, see the *Wireless Design Guide* ([pkdge.co/wirelessdesign](http://pkdge.co/wirelessdesign)).